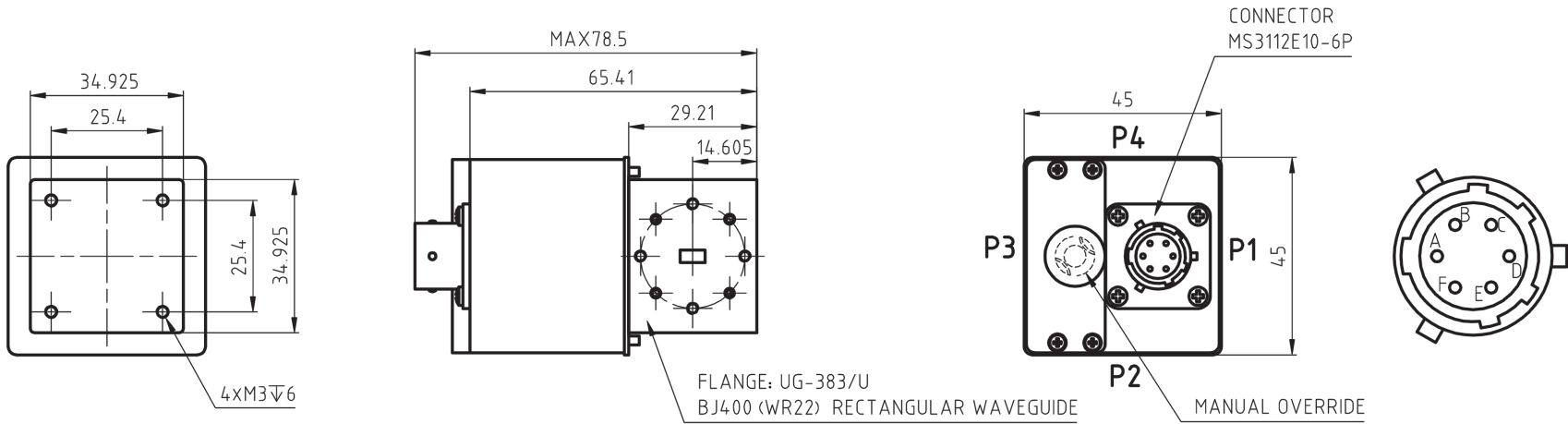
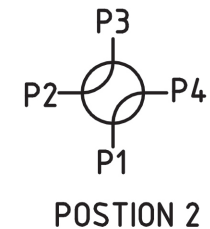
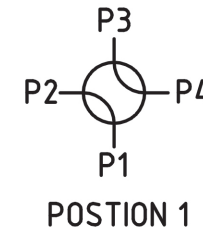
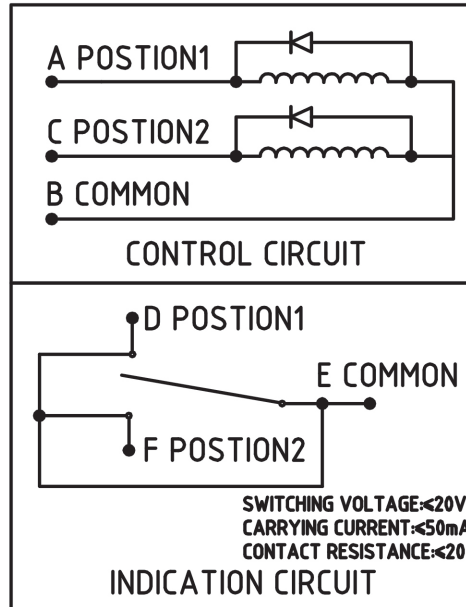


BJ400(WR22) WAVEGUIDE SWITCH



SPECIFICATION

FREQ RANGE: 33.0GHz--50.0GHz
 VSWR: ≤ 1.20
 INSERTION LOSS: ≤ 0.30 dB
 ISOLATION: ≥ 50 dB
 SWITCHING TIME: ≤ 50 mS
 VOLTAGE: 24 VDC, DURATION ≥ 50 mS
 CURRENT: ≤ 625 mA @ (24 VDC, 25°C)
 WORKING TEMPERATURE: -40°C--70°C
 LIFE: 100,000 CYCLES
 CONTROL MODE: LATCHING, MANUAL/ELECTRIC



EXCITATION AND SWITCH STATUS
A VDC, B GND; D-E CONNECTED; POSTION 1
C VDC, B GND; F-E CONNECTED; POSTION 2

Model:FBP70DB2401