

mini SP3T-6T 26.5GHz Normally open

◆ RF Characteristics

| Frequency (GHz) | Ins.loss (dB) | Isolation (dB) | VSWR | RF Power CW (W) |
|-----------------|---------------|----------------|------|-----------------|
| DC-6 | 0.3 | 70 | 1.3 | 80 |
| 6-12 | 0.4 | 60 | 1.4 | 60 |
| 12-18 | 0.5 | 60 | 1.5 | 50 |
| 18-26.5 | 0.6 | 55 | 1.6 | 15 |



◆ Operating Voltage/Coil Current

| Operating Voltage(V) | 12 | 24 | 28 | |
|----------------------|---------------|-----|-----|-----|
| Coil Current (mA) | Normally open | 300 | 150 | 140 |

* It can be selected according to user requirements

| TTL | TTL Low(V) | TTL High | |
|-----|------------|----------|-------|
| | 0-0.3 | 3~5V | 1.4mA |

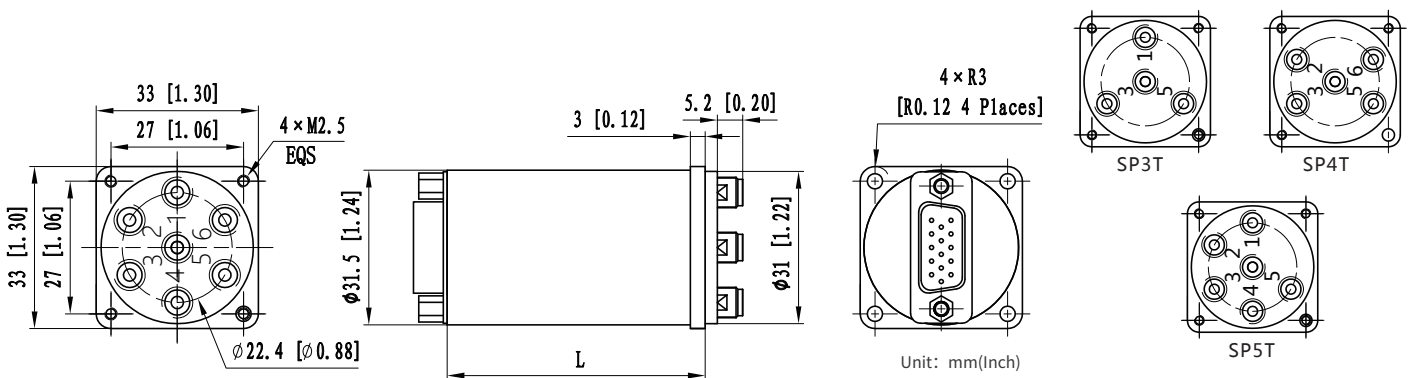
| Indicators | Withstand Voltage V (max) | Current capacity mA(max) | Resistance Ω (max) |
|------------|---------------------------|--------------------------|--------------------|
| | 50 | 100 | 15 |

* Connect VDC & GND before the function operates

◆ Product Functions

- DC to 26.5GHz
- Low loss, Low VSWR, High Isolation
- SMA Connector
- Selectable TTL driver control
- Miniaturization

◆ Outline Drawing

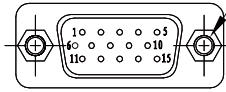


L = 67.5(Non TTL/TTL/Indicators)

◆ Specifications

| | | |
|---|--|---|
| Switching Sequence: Break before Make | Mechanical Life Cycles: 2 million cycles | Mechanical Shock, Non-Operating: 50G、1/2 Sine、11 ms |
| Switching Time: 15ms max | RF Connectors: SMA Female | Vibration Operating: 20-2000 Hz、10G RMS |
| Storage temperature: -55°C~85°C | Impedance: 50Ω | Actuator Terminals: Solder Pins/D-SUB 15Pin Male |
| Operating temperature: -25°C~65°C(Standard) | | Weight: 120g |
| -45°C~85°C(Extended1) | | |
| -55°C~85°C(Extended2) | | |

2 × UNC#4-40▽4
[Depth 0.157]

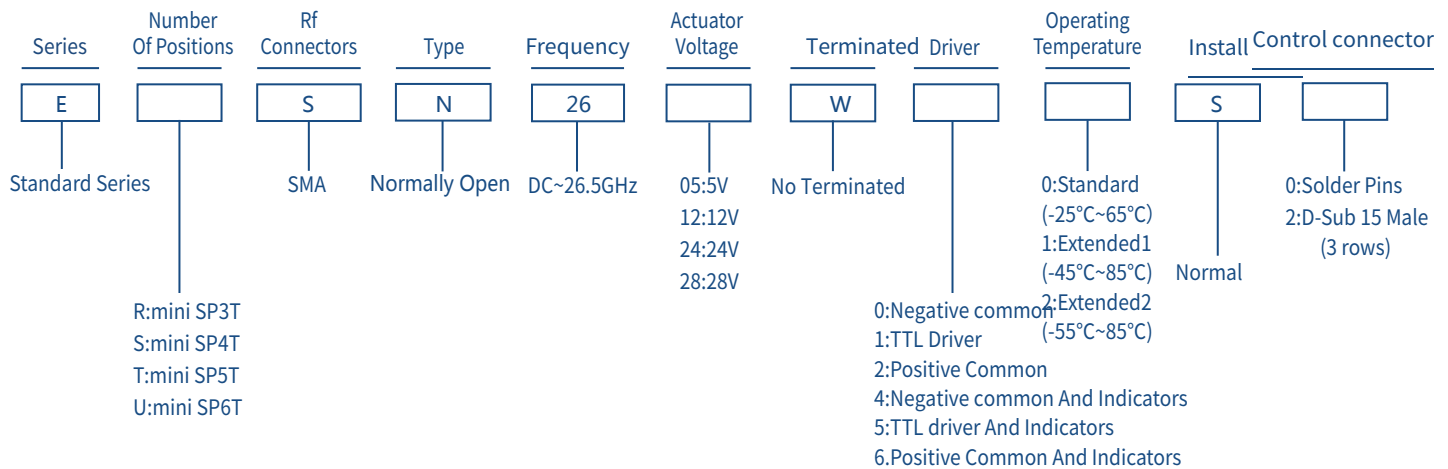


DB15 male

◆ Truth Table

| Normally open Non TTL | | | | | | Normally open TTL | | | | | |
|-----------------------|---------|--------------|--------|--------|--------|--------------------|---------|--------------|--------|--------|--------|
| Actuator Terminals | | RF Connector | | | | Actuator Terminals | | RF Connector | | | |
| D-SUB 15Pin Male | | | | | | D-SUB 15Pin Male | | | | | |
| Pin No. | Define | SP3T | SP4T | SP5T | SP6T | Pin No. | Define | SP3T | SP4T | SP5T | SP6T |
| 1 | V1 | RF 1-0 | - | RF 1-0 | RF 1-0 | 1 | TTL | RF 1-0 | - | RF 1-0 | RF 1-0 |
| 2 | V2 | - | RF 2-0 | RF 2-0 | RF 2-0 | 2 | TTL | - | RF 2-0 | RF 2-0 | RF 2-0 |
| 3 | V3 | RF 3-0 | RF 3-0 | RF 3-0 | RF 3-0 | 3 | TTL | RF 3-0 | RF 3-0 | RF 3-0 | RF 3-0 |
| 4 | V4 | - | - | RF 4-0 | RF 4-0 | 4 | TTL | - | - | RF 4-0 | RF 4-0 |
| 5 | V5 | RF 5-0 | RF 5-0 | RF 5-0 | RF 5-0 | 5 | TTL | RF 5-0 | RF 5-0 | RF 5-0 | RF 5-0 |
| 6 | V6 | - | RF 6-0 | - | RF 6-0 | 6 | TTL | - | RF 6-0 | - | RF 6-0 |
| 7 | GND | - | - | - | - | 7 | VDC | - | - | - | - |
| 8 | Ind.1 | RF 1-0 | - | RF 1-0 | RF 1-0 | 8 | GND | - | - | - | - |
| 9 | Ind.2 | - | RF 2-0 | RF 2-0 | RF 2-0 | 9 | Ind.1 | RF 1-0 | - | RF 1-0 | RF 1-0 |
| 10 | Ind.3 | RF 3-0 | RF 3-0 | RF 3-0 | RF 3-0 | 10 | Ind.2 | - | RF 2-0 | RF 2-0 | RF 2-0 |
| 11 | Ind.4 | - | - | RF 4-0 | RF 4-0 | 11 | Ind.3 | RF 3-0 | RF 3-0 | RF 3-0 | RF 3-0 |
| 12 | Ind.5 | RF 5-0 | RF 5-0 | RF 5-0 | RF 5-0 | 12 | Ind.4 | - | - | RF 4-0 | RF 4-0 |
| 13 | Ind.6 | - | RF 6-0 | - | RF 6-0 | 13 | Ind.5 | RF 5-0 | RF 5-0 | RF 5-0 | RF 5-0 |
| 14 | Ind.com | - | - | - | - | 14 | Ind.6 | - | RF 6-0 | - | RF 6-0 |
| 15 | VDC | - | - | - | - | 15 | Ind.com | - | - | - | - |

◆ Product Selection



★ EXP: ERSN2605W00S0: Standard Series、Mini SP3T、SMA、Normally Open、DC~26.5GHz、5V、Non Terminated、Negative common、Standard、Normal、Solder Pins.